

Installation instructions board

Please read these installation instructions **before** you start the installation and observe our instructions.

ATTENTION!

Observe the points described in this manual. Failure to comply will void any warranty. The liability will be transferred to you as soon as you start the conversion.

You need the following tools for the modification:

- soldering iron
- solder
- screwdriver

Step by step:

1. First check if you really have a HL RX-18 or Taigen 2.4GHz. The module works **ONLY** with these motherboards.
2. There are 3 weld points to set. Please note the picture how to weld the cable as well.
3. Weld point no. 1: ground (black cable) is welded on the main switch (on / off), or directly on the board, on the black cable you see on the picture (cable from the fan).
4. Weld point no. 2 (picture 1): The signal cable (green wire) solder the green wire on the third place from the left. Please pay attention not to cause short-circuit (do not touch the other solder pads on the board).
5. Weld point no. 3: Plus v. 7.2 (red wire) is soldered on the main switch (on / off), or on the red cable on the picture (cable from the fan).
6. Now for the engines (picture 2): Disconnect the red wire of the left engine and cut it in the middle. clamp the one end who are coming from the motor to the no. 1a of the module. The same with the red cable end who is coming from the board, this time to the terminal 1B. The same with the right red motor cable, and this time the terminal 2A and 2B.

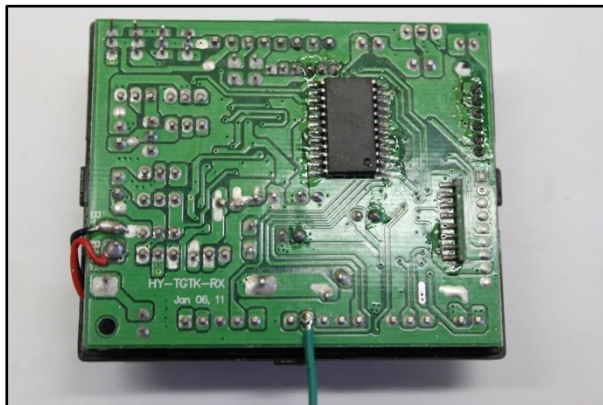


photo 1 / Taigen 2.4GHz

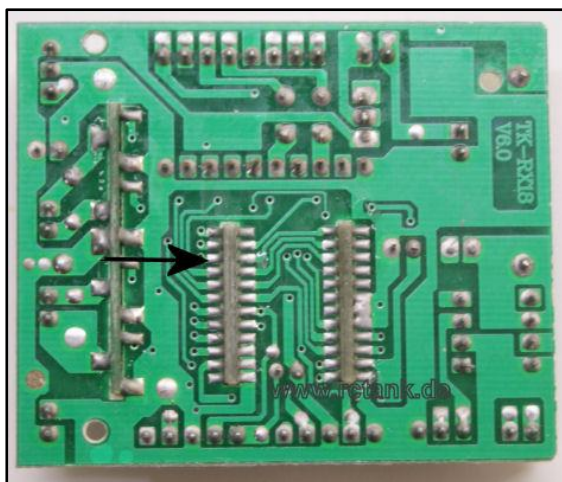


photo 1 / RX18 Heng Long



photo 2 / ARM-Modul

The RCTank team wishes every success.